

HOW TO WEAR A MASK SAFELY

LINCOLNWOOD
LIBRARY

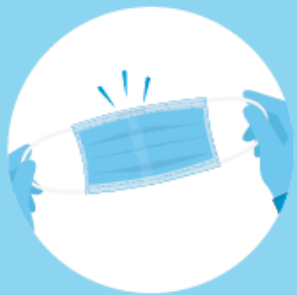
Do's



Wash your hands
before touching the mask.



Inspect the mask for
tears or holes.



Find the top side, often
where the metal or
stiff edge is.



Ensure the side with color
faces outward.



Place the metal piece or
stiff edge over your nose.



Cover your mouth,
nose, and chin.



Adjust the mask to your face
without leaving gaps on the sides.



Avoid touching
the mask.



Remove the mask from
behind the ears or head.



Wash the mask if it is
reusable, and keep the mask
from touching you and surfaces.



Discard non-washable
masks right away.



Wash your hands after
discarding the mask.

Dont's



**Do not wear your
mask under your
chin.**



**Do not wear
your mask below
your nose.**



**Do not wear your
mask loosely with
gaps on the sides.**



**Do not leave
your chin
exposed.**



**Do not wear your mask so it
covers just the tip of your nose.**



World Health
Organization

Source:
[who.int/epi-win](https://www.who.int/epi-win)

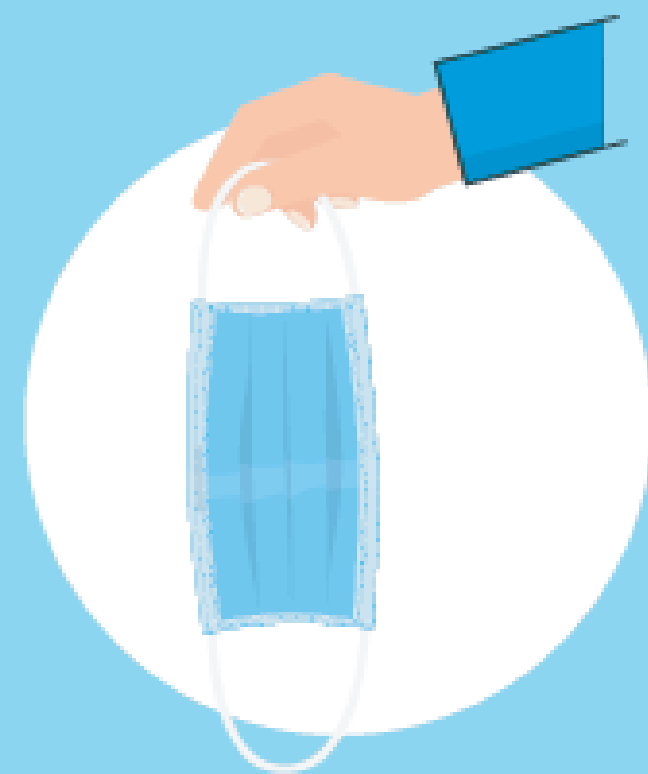
HOW TO WEAR A MASK SAFELY

LINCOLNWOOD
LIBRARY

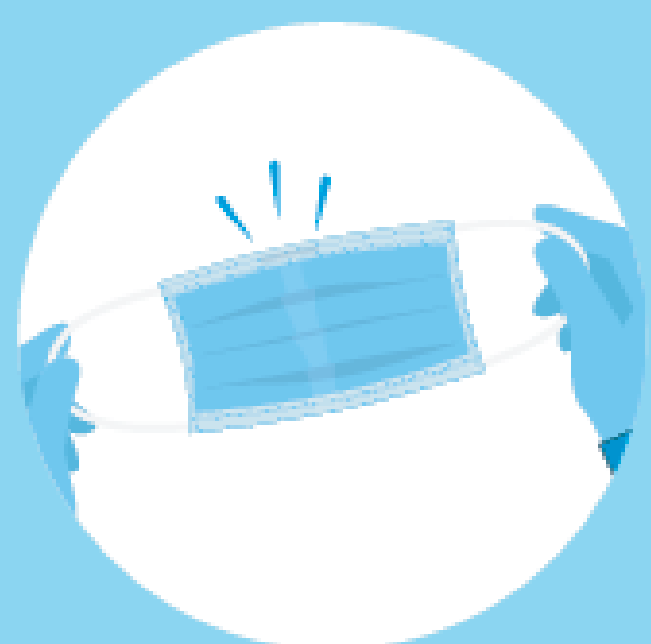
Do's



Wash your hands
before touching the mask.



Inspect the mask for
tears or holes.



Find the top side, often
where the metal or
stiff edge is.



Ensure the side with color
faces outward.



Place the metal piece or
stiff edge over your nose.



Cover your mouth,
nose, and chin.



Adjust the mask to your face
without leaving gaps on the sides.



Avoid touching
the mask.



Remove the mask from
behind the ears or head.



Wash the mask if it is
reusable, and keep the mask
from touching you and surfaces.



Discard non-washable
masks right away.



Wash your hands after
discarding the mask.

Dont's



**Do not wear your
mask under your
chin.**



**Do not wear
your mask below
your nose.**



**Do not wear your
mask loosely with
gaps on the sides.**



**Do not leave
your chin
exposed.**



**Do not wear your mask so it
covers just the tip of your nose.**



World Health
Organization

Source: [who.int/epi-win](https://www.who.int/epi-win)

TO BE IN THE BUILDING, YOU MUST WEAR YOUR MASK PROPERLY.

Dont's (X)



Do not wear your mask below your nose.



Do not wear your mask under your chin.



Do not leave your chin exposed.

Do not wear your mask so it covers just the tip of your nose.



Do not wear your mask loosely with gaps on the sides.

FAILURE TO WEAR YOUR MASK PROPERLY WILL RESULT IN LIBRARY STAFF ASKING YOU TO LEAVE THE BUILDING.

FOR THE SAFETY OF EVERYONE, PLEASE WEAR YOUR FACE COVERING CORRECTLY.

Wearing a face covering correctly is important for it to be effective.

1. Tighten the loops or ties so it's snug around your face.
2. Wear your mask all the way down under your chin.
3. Wear your mask all the way up to the bridge of your nose.

